

SWYDDFA COMISIYNYDD HEDDLU
A THROSEDD GOGLEDD CYMRU



OFFICE OF THE POLICE & CRIME
COMMISSIONER NORTH WALES

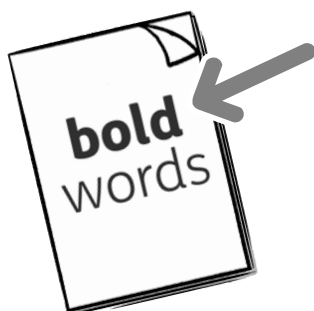
Policing in North Wales

What do you think?



easy
read

How to use this document on your computer



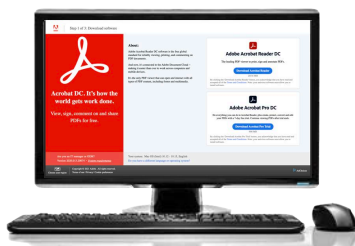
In this easy read document, difficult words are in **bold**. We explain what these words mean in the sentence after they have been used.



Some words are [blue and underlined](#). These are links which will go to another website which has more information. How to use this document.



To complete this questionnaire you need to download it to your computer and open it in Acrobat Reader.



You can get Acrobat Reader for free from:

<https://get.adobe.com/uk/reader/>



On the website click the blue button 'Download Acrobat Reader' and follow the instructions.

Introduction

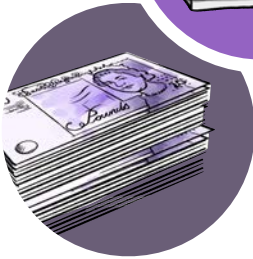
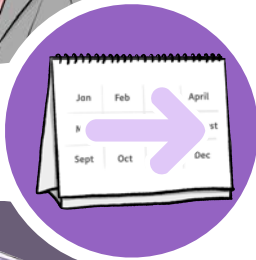


The Police and Crime Commissioner and Chief Constable are writing a new plan for police work in North Wales.

It is called the Police and Crime Plan.

Before the final plan is written, they want to know what you think about:

- what should be included in the plan
- what police services should be like in the future
- what the police should spend their money on.



You can let them know what you think by filling in this Easy Read survey.



You need to send your answers back by August 20, 2021.

The survey



Things that are most important



1. We would like to know what you think are the most important things to spend time and money on.



- a. How important to you is it that we fight organised crime and prevent serious harm?

- Not at all important
- A little important
- Quite important
- Important
- Very important



b. How important to you is it that we help people deal with **social media trolls**?

Social media trolls are people who say harmful things on the internet.

- Not at all important
- A little important
- Quite important
- Important
- Very important



c. How important to you is it that we protect **vulnerable** adults from harm and being treated badly?

Vulnerable means you might need help and support to stay safe and well.

- Not at all important
- A little important
- Quite important
- Important
- Very important



d. How important to you is it that we look into **cyber-crime**?

Cyber-crime is when people break the law on the internet.

- Not at all important
- A little important
- Quite important
- Important
- Very important



e. How important to you is it that we answer non-emergency calls to 101 quickly?

- Not at all important
- A little important
- Quite important
- Important
- Very important



f. How important to you is it that we reduce the number of:

- car crashes
- people killed or injured on the roads
- people breaking the law on the roads?

Not at all important

A little important

Quite important

Important

Very important



g. How important is it to you that we deal with minor crimes and **anti-social behaviour**?

Anti-social behaviour is when people do things that upset or annoy other people.

Not at all important

A little important

Quite important

Important

Very important



h. How important to you is it that we deal with **domestic violence**?

Domestic violence is when you are harmed by a family member or someone you live with.

- Not at all important
- A little important
- Quite important
- Important
- Very important



i. How important to you is it that we protect children and young people from harm and being treated badly?

- Not at all important
- A little important
- Quite important
- Important
- Very important



j. How important to you is it that we deal with people who have been found with a small amount of drugs?

- Not at all important
- A little important
- Quite important
- Important
- Very important



k. How important to you is it that we deal with crime in the countryside and to do with wildlife?

- Not at all important
- A little important
- Quite important
- Important
- Very important



l. How important to you is it that we answer emergency calls to 999 quickly?

- Not at all important
- A little important
- Quite important
- Important
- Very important



m. How important to you is it that we deal with situations to do with people's mental health?

- Not at all important
- A little important
- Quite important
- Important
- Very important



n. How important to you is it that we try to find people who are missing?

- Not at all important
- A little important
- Quite important
- Important
- Very important



o. How important to you is it that we protect children when they are using the internet?

- Not at all important
- A little important
- Quite important
- Important
- Very important

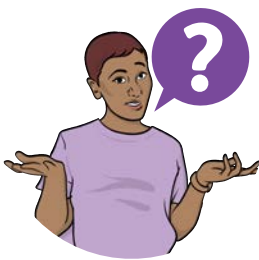


2. How could the police make the most difference in your area? (Please say in the box.)

What we should do in the future



3. The Welsh Government is paying for about 20 more Police Community Support Officers in North Wales.



Where do you think it is most important for them to work? (Please tick only 1 box.)

- In the busiest towns
- In the countryside
- Evenly split across North Wales
- Used for solving problems and preventing crime



4. Some services are likely to change in the future as the world changes and North Wales spends more or less money on them.

Please tell us how important you think these services should be over the next 3 years.



a. How important to you is more online and digital contact with the police?

- Not at all important
- A little important
- Quite important
- Important
- Very important



b. How important to you is keeping police buildings and counters?

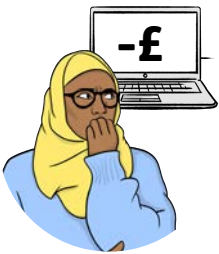
- Not at all important
- A little important
- Quite important
- Important
- Very important



- c. How important to you is the use of **Artificial Intelligence** and technology?

Artificial intelligence is computers and machines that can do things and make decisions, like a human.

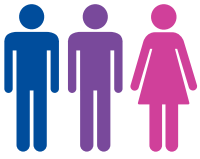
- Not at all important
- A little important
- Quite important
- Important
- Very important



- d. How important to you is it that we deal with online crime, like people stealing money or saying harmful things?

- Not at all important
- A little important
- Quite important
- Important
- Very important

About you



1. How would you describe your gender?

- Male
- Female
- Other
- Prefer not to say



2. Do you identify as LGBT+? This means you are gay, lesbian, bi-sexual or transgender

- Yes
- No
- Prefer not to say



3. How old are you?

- | | |
|-----------------------------------|--|
| <input type="checkbox"/> 16 to 24 | <input type="checkbox"/> 55 to 64 |
| <input type="checkbox"/> 25 to 34 | <input type="checkbox"/> 65 to 74 |
| <input type="checkbox"/> 35 to 44 | <input type="checkbox"/> 75 or above |
| <input type="checkbox"/> 45 to 54 | <input type="checkbox"/> Prefer not to say |



4. How well can you speak Welsh?

- No spoken Welsh ability
- I know how to pronounce Welsh words and can say hello
- Can speak a little Welsh
- Basic conversation
- Can speak a fair amount of Welsh
- Speak Welsh fluently
- Prefer not to say

5. What is your ethnic group?



- Asian or Asian British (Indian)
- Asian or Asian British (Pakistani)
- Asian or Asian British (Bangladeshi)
- Asian or Asian British (any other Asian background)
- Black or Black British (Caribbean)
- Black or Black British (African)
- Black or Black British (any other Black background)
- Chinese
- Mixed (White and Black Caribbean)
- Mixed (White and Black African)
- Mixed (any other mixed background)
- White British
- White English

- White Scottish
- White Welsh
- White Irish
- White (any other White background)
- Other ethnic group
- Prefer not to say



6. Do you have a **disability**?

A **disability** is when you have a physical or mental condition that makes it harder for you to do everyday activities and live your life.

- Yes
- No
- Prefer not to say

Thank You



Thank you for answering the questions.

You will be helping us to write the Police and Crime Plan for North Wales.

Please now send us your completed survey by clicking this button:

[Click here](#)



A new email will open on with our address on it and your survey attached.



You need to click 'send' on your email browser to send the survey back to us.



We need your answers back by August 20, 2021.

For more information

If you need more information please contact us by:



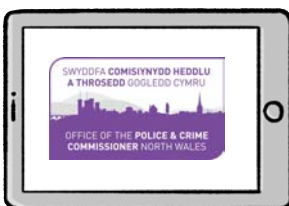
Telephone: 01492 805486



Email: OPCC@nthwales.pnn.police.uk



Post: Office of the Police and Crime
Commissioner North Wales
Police Headquarters
Glan y Don
Colwyn Bay
Conwy
LL29 8AW



Website: www.northwales-pcc.gov.uk

Easy Read by easy-read-online.co.uk