

What the police should work on

Tell us what you think



Easy
Read

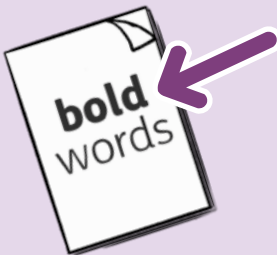
Easy Read



This is an Easy Read version of some information. It may not include all of the information but it will tell you about the important parts.



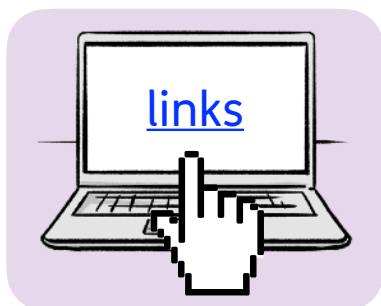
This Easy Read booklet uses easier words and pictures. Some people may still want help to read it.



Some words are in **bold** - this means the writing is thicker and darker. These are important words in the booklet.



Sometimes if a bold word is hard to understand, we will explain what it means.



[Blue and underlined](#) words show links to websites and email addresses. You can click on these links on a computer.

What is in this booklet

About this survey	4
What is most important to you?	5
About you	21
Thank you	29
Find out more	30

About this survey



This is a survey from the **Police and Crime Commissioner** for North Wales.



The **Police and Crime Commissioner** is in charge of policing in North Wales.



We are writing a plan for how the police should work in North Wales.



We want to know what you think. This will help us understand what we need to include in our plan.



Please answer the questions to tell us what you think.

Please send us your answers by the end of the day on 27 September 2024.

What is most important to you?



The police have a lot of different things that they need to do.



So we need to think hard about what the police should spend time and money on.



We want the police to work on the things that are most important to the public.



Please answer the questions to tell us what is most important to you.

The questions start on the next page.

Local police



Local police wear uniforms and work out and about in the local community.



They deal with crimes that happen in the local area.

Please tell us how important each of these things are to you:



1. Making sure that local policing is a big part of North Wales Police's work.

Not important at all

Slightly important

Important

Fairly important

Very important

I do not know

Please tell us how important each of these things are to you:



2. Working with local councils to look at how we use **CCTV** to stop crime.

CCTV are cameras that film local streets. The police can use them to find out more about crimes that have happened.

Not important at all

Slightly important

Important

Fairly important

Very important

I do not know



3. Stopping crime in the countryside.

Not important at all

Slightly important

Important

Fairly important

Very important

I do not know

Please tell us how important each of these things are to you:



4. Stopping gangs and other serious crime.

Not important at all

Slightly important

Important

Fairly important

Very important

I do not know



5. Stopping people from using electric bikes and scooters in the wrong way.

Not important at all

Slightly important

Important

Fairly important

Very important

I do not know

Please tell us how important this is to you:



6. Keeping people safe on the roads.

Not
important
at all

Slightly
important

Important

Fairly
important

Very
important

I do not
know

Supporting victims and other local people

Please tell us how important each of these things are to you:



7. Writing a plan to help victims of **domestic abuse** to find a place to live.



Domestic abuse is when you are harmed by a family member or someone you live with.

Not important at all

Slightly important

Important

Fairly important

Very important

I do not know

Please tell us how important each of these things are to you:



8. Stopping violence against women and girls.

Not important at all

Slightly important

Important

Fairly important

Very important

I do not know



9. Stopping young people from behaving in ways that cause problems for everyone else.

This is called **anti-social behaviour**.

Not important at all

Slightly important

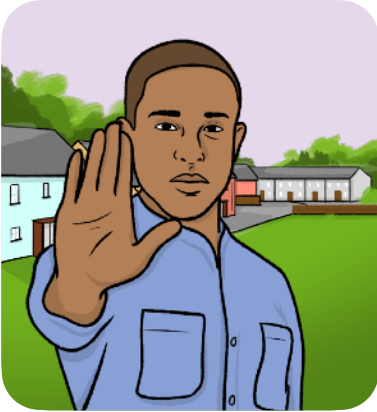
Important

Fairly important

Very important

I do not know

Please tell us how important each of these things are to you:



10. Creating **anti-social behaviour champions** for each county.

Anti-social behaviour champions are people who work to stop anti-social behaviour in their area.

Not
important
at all

Slightly
important

Important

Fairly
important

Very
important

I do not
know



11. Setting up an organisation called a **business and tourism forum** to support companies in North Wales.

Not
important
at all

Slightly
important

Important

Fairly
important

Very
important

I do not
know

Please tell us how important this is to you:



12. Making sure that police always go to someone's home if it gets broken into.

Not
important
at all

Slightly
important

Important

Fairly
important

Very
important

I do not
know

A fair criminal justice system



The **criminal justice system** is all the different organisations involved in dealing with people who have broken the law.

It includes the police, courts and prisons.

Please tell us how important this is to you:



13. Following the **Criminal Justice Board for Wales Anti-Racism Plan**.

This is a plan that helps to stop the criminal justice system from being unfair to people of different races.

Not important at all

Slightly important

Important

Fairly important

Very important

I do not know

Please tell us how important each of these things are to you:



14. Using the **Victims' Panel** more.

The **Victims' Panel** is a chance for victims of crime to say what they think the police could do better.

Not important at all

Slightly important

Important

Fairly important

Very important

I do not know



15. Learning about projects that can stop domestic abuse from happening.

Not important at all

Slightly important

Important

Fairly important

Very important

I do not know

Please tell us how important this is to you:



16. Finding out more about how gambling can harm people.

Not
important
at all

Slightly
important

Important

Fairly
important

Very
important

I do not
know

The Police and Crime Commissioner (PCC)



These questions are about how the Police and Crime Commissioner (PCC) works.

Please tell us how important each of these things are to you:



17. The PCC should give the public information about what we are doing, 4 times each year.

Not
important
at all

Slightly
important

Important

Fairly
important

Very
important

I do not
know

Please tell us how important each of these things are to you:



18. Police officers and staff should follow rules about behaving well at all times.

Not important at all

Slightly important

Important

Fairly important

Very important

I do not know



19. The PCC should make sure the **Chief Constable** and police are doing their job properly.

The **Chief Constable** is the police officer in charge of the police in North Wales.

Not important at all

Slightly important

Important

Fairly important

Very important

I do not know

Please tell us how important this is to you:



20. The PCC should make sure that the police have enough money and staff to stop crime.

Not
important
at all

Slightly
important

Important

Fairly
important

Very
important

I do not
know



Question 21: How could the Police make the most difference for you and the people in your local community?

A large, empty rectangular box with a purple border, intended for the user to write their answer to the question.

About you



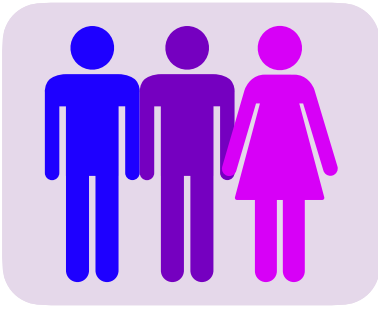
These questions are about you.



They help to make sure that we hear from lots of different people across North Wales.



You do not have to answer them if you do not want to.



Question 22: What is your gender?

Gender is whether you are a man, a woman or use a different word.

- Man
- Woman
- Other
- I do not want to say



Question 23: How old are you?

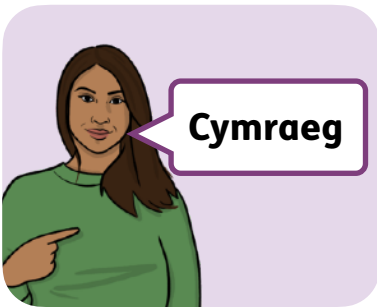
- Under 16
- 16 to 24
- 25 to 34
- 45 to 54
- 55 to 64
- 65 to 74
- 75 or older
- I do not want to say



Question 24: Are you **LGBTQ+**?

LGBTQ+ is used to describe people with different sexualities, like gay and bi-sexual. It also includes people who have changed their gender or feel themselves to be a different gender.

- Yes
- No
- I do not want to say



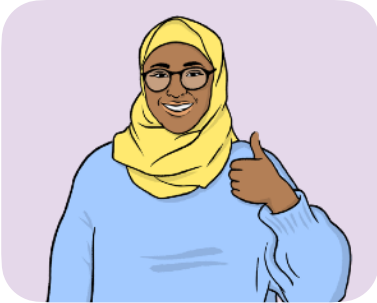
Question 25: Can you speak Welsh?

- No
- I can say some easy words
- I can speak a bit of Welsh
- I can speak quite a lot of Welsh
- I can speak Welsh very well
- I do not want to say



Question 26: What is your **ethnic group**?

Your **ethnic group** means your race and the country that your family comes from.



Asian or Asian British

- Indian
- Pakistani
- Bangladeshi
- Any other Asian background



Black or Black British

- Caribbean
- African
- Any other Black background



- Chinese

There are more choices on the next page.



Mixed

- White and Black Caribbean
- White and Black African
- White and Asian
- Any other Mixed background



White

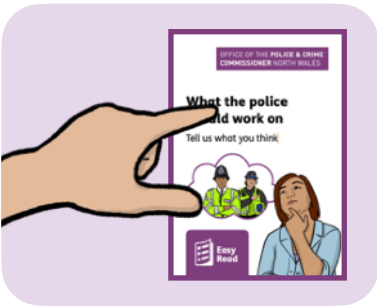
- British
- English
- Scottish
- Welsh
- Irish
- Any other White background

- Any other ethnic group
- I do not want to say



Question 27: Do you have a disability or long-term illness?

- Yes
- No
- I do not want to say



Question 28: How did you hear about this survey?

- A meeting called a public consultation
- Social media, like Facebook or Instagram
- Friends or family
- A text or email
- Newspaper
- Advert
- I do not want to say



Question 29: Which county do you live in?

- Anglesey
- Gwynedd
- Conwy
- Denbighshire
- Flintshire
- Wrexham
- I do not want to say

Thank you



Thank you for answering these questions.



You can send us your answers by pressing this button.

When you press the button, it will open an email to us. You will need to press 'send' on the email to send it to us.



Please send us your answers by the end of the day on 27 September 2024.

Find out more

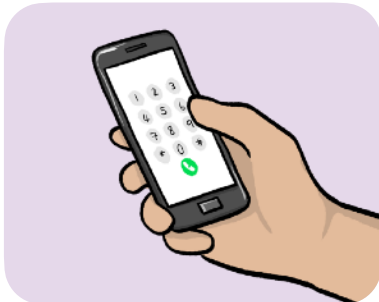


You can look at our website here:
www.northwales-pcc.gov.uk

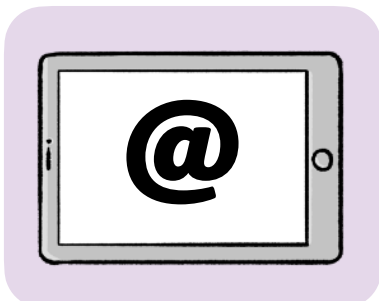


You can contact us by:

- Post:
Glan y Don,
Bae Colwyn / Colwyn Bay
LL29 8AW



- Phone: 01492 805 486



- Email: OPCC@northwales.police.uk

This Easy Read booklet was produced by easy-read-online.co.uk
The booklet includes images licensed from Photosymbols & Shutterstock.